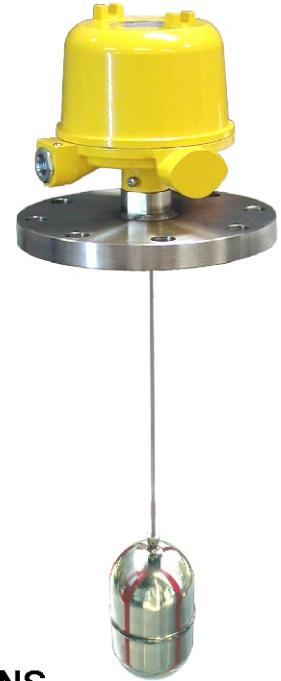




SERIES: LSF400

- SNAP-ACTION SWITCH
- SUITABLE FOR LIQUIDS
- 0.75 MIN. SPECIFIC GRAVITY
- HEAVY-DUTY CONSTRUCTION
- ALL ST. STEEL WETTED PARTS
- HIGH PRESSURE & HIGH TEMPERATURE APPLICATIONS
- UNIQUE SWITCHING MECHANISM FOR INCREASED RELIABILITY



INTRODUCTION

Indumart *LSF400 Series* of Vertical Magnetic Type Level Switches is designed to control liquid level in a vast variety of applications including high temperature (up to 400°C) and/or high pressure (up to 1000 psi) vessels and boilers, waste water or clean water tanks, chemical storage tanks, fuel oil or beverage tanks, etc.

Variations of liquid level in the tank would cause vertical movement of the float. This movement translates into displacement of permanent magnet connected to the floaters shaft. Movement of the permanent magnet causes the two other magnets to achieve snap-action switching without mechanical connection.

A variety of chambers may be used for side connection, if the instrument should be connected to the side of the tank.

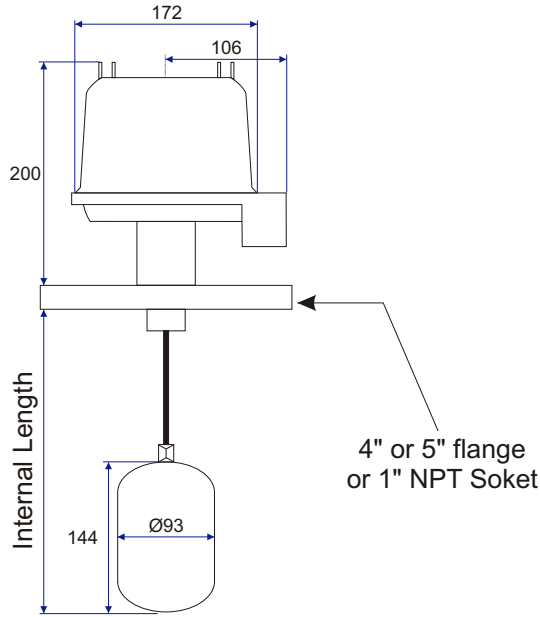
SPECIFICATIONS

Housing Material	Aluminum die cast
Flange or Socket	Stainless steel
Float/ Rod / Spacer	316 stainless steel
Enclosure Rating	IP65 Weather Proof
Application	Liquid level control
Specific Gravity	0.75 minimum
Measuring Length	Up to 1500 mm
Switching Differential	10 mm
Maximum Pressure	1000 psi (70 bar)
Max. Operating Temp.	400°C (750°F)
Output Switch	1 SPDT or 2 SPDT (DPDT); Snap-action
Contact Rating	10A @ 250 VAC
Switch Housing	Ceramic
Cable Gland	½" or ¾" NPT

For chamber material and length options, please see the CHAMBER SELECTION section.

Specifications may change without prior notice.

DIMENSIONS (mm)



ORDER CODES

LSF400-

SWITCH TYPE
 1 SPDT
 2 SPDT (DPDT)

1
 2

WETTED PARTS
 SS 304
 SS 316

1
 2

PROCESS CONNECTION
 1" NPT Socket
 ANSI 4" - 150# RF Flange
 ANSI 5" - 150# RF Flange
 Other (please specify)

1
 4
 5
 X

CONDUIT CONNECTION
 1/2" NPT
 3/4" NPT

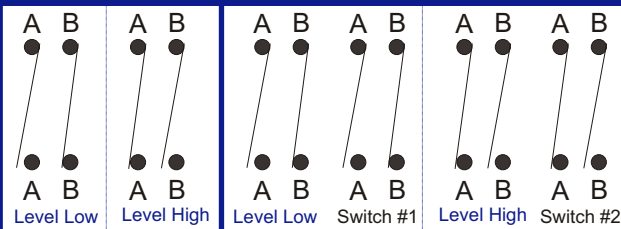
1
 2

INTERNAL LENGTH
 (Please specify)

SWITCHING DIAGRAM

1 Switch

2 Switches



ORDER CODES (CHAMBER)

CH-

TYPE OF CHAMBER
 Side - Side (S. W.)
 Side - Side (flange)
 Side - Bottom (S. W.)
 Side - Bottom (flange)

1
 2
 3
 4

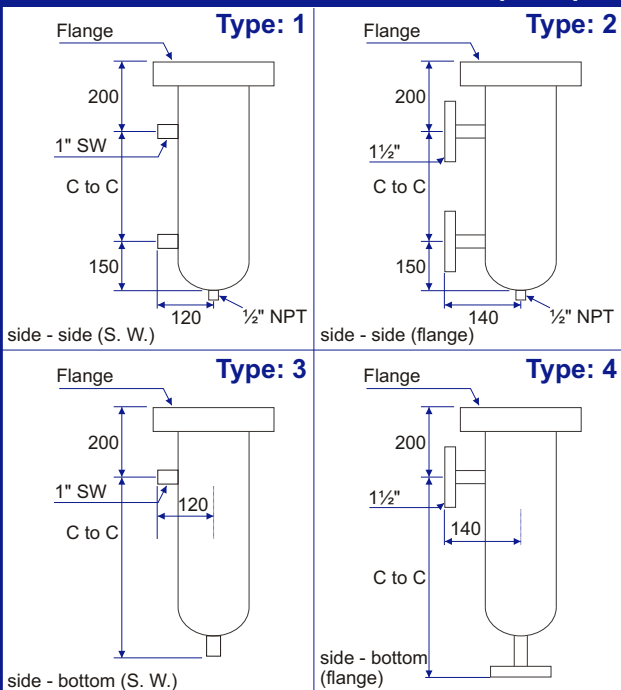
CHAMBER MATERIAL
 Carbon Steel
 SS 304
 SS 316
 Other

1
 2
 3
 X

C to C LENGTH
 (please specify)

CHAMBER SCH # (PRESSURE RATING)
 (Please specify)

CHAMBER DIMENSIONS (mm)



YOUR SOURCE FOR LEVEL INSTRUMENTS



INDUMART INC.

1-15 W. Pearce St., Richmond Hill, Ont. L4B 1H6, Canada
 Phone: (905) 707-9998 Fax: (905) 707-8484 E-mail: Sales@Indumart.com