



1, 2, 3 & 5-VALVE DESIGNS

- FULL ISOLATION
- NO SHARP EDGES
- CHOICE OF MATERIAL
- BLEED OR VENT PORT
- AESTHETIC, SAFE DESIGN
- NPT OR BSP CONNECTION
- GAS SERVICE - BUBBLE TIDE
- MALE OR FEMALE CONNECTION
- FIT ALL MAKES OF TRANSMITTERS
- LIQUID, STEAM & VACUUM SERVICES



DESCRIPTION

Indumart offers a complete line of instrument valve manifolds. These valves are constructed out of high quality, 316 stainless steel bar-stocks. Optional body materials such as Monel 400, Hastelloy C, etc can be ordered.

Designs are available to suit mating flange styles such as: DIN or ANSI, with raised face or ring type Joint sealing.

These valve manifolds may be used in applications ranging from boiler duty to oil-free oxygen and sour gas services.

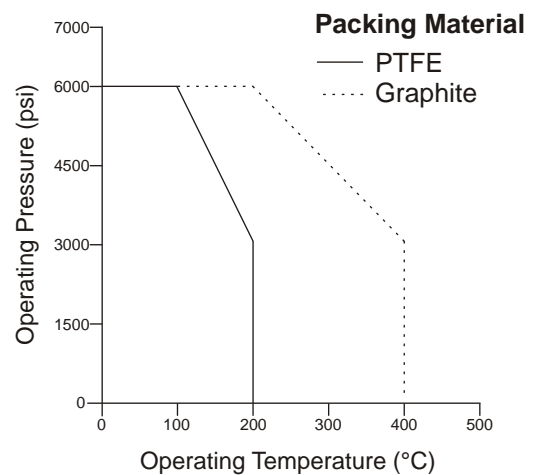
Safety features incorporate a doweled T-Bar, lockable pusher assembly, locked bonnet, non-rotating trim, anti-blowout spindle, spindle back seal and full process isolation. The unit is suitable for both positive and negative pressures, for liquids and gases including oxygen service.

Standard packing material is Teflon®. Graphite packing suitable for high temperature (400°C) may be ordered as option.

SPECIFICATIONS

Operating Pressure	6000 psi (410 bar) @ 100°C
Material of Construction	316SS (std); monel 400 & Hastelloy C (option)
Packing Material	PTFE (std), graphite (op.)
Connection	Male or female NPT or BSP ANSI, DIN, flanged
Colour Coded Dust Cap Tap Identification	Red, green & blue Vent, equalize & isolate

**Pressure vs. Temperature
316 Stainless Steel Manifolds**





Isolation Valve
Male or Female Connection



Gauge Valve (Bleeding)
Male or Female Connection



Gauge Valve (Multiport)
Male or Female Connection



2-Valve Manifold (Remote Mount)
Male or Female Connection



3-Valve Manifold (One Side Flanged)



3-Valve Manifold (Direct Mount)
Remote Mount, Bleeding Type and Coplanar Instrument Connection are available



3-Valve Manifold (Double Flanged)
Direct mounting onto primary flow elements



2-Valve Manifold (Direct Mount)

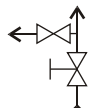


5-Valve Manifold (Direct Mount)
Remote Mount and Flanged Type (flanged on one or both sides) are also available

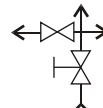
SCHEMATICS & SYMBOLS



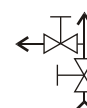
Isolation



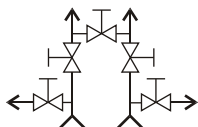
Gauge (Block & Bleed)



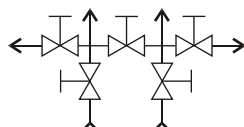
Gauge (Multiport)



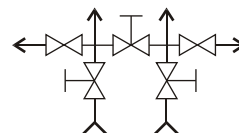
2-Valve Manifold



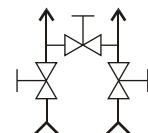
5-Valve Manifold with Upstream Vent



5-Valve Manifold



3-Valve Manifold with Bleed Plugs



3-Valve Manifold