

## SERIES: P21

**Dial:** 4", 6"  
**Accuracy:** 1.0%

### DESCRIPTION

Indumart *P21 Series* Heavy Duty Pressure Gauges are equipped with a heavy wall Bourdon tube and a sturdy case. Because of their robust design, these gauges meet stringent demands and can be used in industrial applications where particular importance is attached to measuring accuracy, reproducibility and long-term stability.

Optionally the *P21 Series* pressure gauges may be supplied with various types of wall or panel mounting configurations, and stainless steel case and bezel.

### SPECIFICATIONS

<b>Accuracy</b>	1.0%
<b>Dial Sizes</b>	4" (100 mm), 6" (160 mm)
<b>Case &amp; Bayonet Bezel</b>	Steel black (standard), st. steel (option)
<b>Connection</b>	Back or bottom
<b>Thread</b>	½" NPT, BSP thread (option)
<b>Window</b>	Glass
<b>Bourdon Tube</b>	Brass; 316 st. steel (option)
<b>Blow-out Disk</b>	NBR
<b>Max. Temperature</b>	60°C
<b>Range</b>	0...10 to 0...15000 psi; 0...60 to 0...100000 kPa; 0...0.6 to 0...1000 bar Vacuum and compound ranges are available; see the Range Table

DIMENSIONS (mm) & WEIGHT		
	Ø100 mm	Ø160 mm
D1	101.5	161
D2	99	159
H1	140	205
H2	83	83
L	50	50
Weight (g)	600	900



### ORDER CODES

**Model P21**

#### CONNECTION

Back  
Bottom

K  
T

#### DIAL SIZE

100 mm (4")  
160 mm (6")

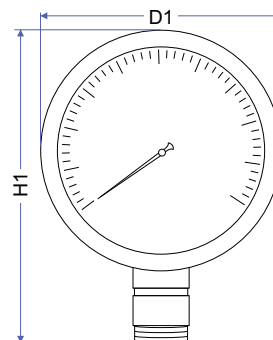
4  
6

#### OPTIONS (more than one option may be selected)

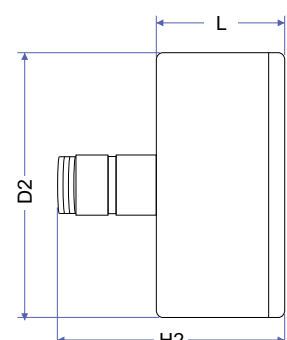
St. Steel Case and Bezel  
Internal St. Steel  
BSP Thread  
Back Flange for wall mounting  
Front Flange for panel mounting  
U-bracket for panel mounting

CT  
IT  
TB  
MK  
MF  
MU

Example: P21T4-CT,TB,MF



Bottom connection



Back connection

Specifications may change without prior notice.